



# Municipal Newsletter

(The Municipal Newsletter is now available on-line @ [www.redlake.ca](http://www.redlake.ca))  
December 15<sup>th</sup>, 2011, Volume No. 27-11



## MUNICIPAL OFFICE

2 Fifth Street  
Box 1000  
Balmertown, Ontario  
P0V 1C0

### Hours of Operation

Monday – Friday  
8:30 a.m. – 4:30 p.m.

### Phone Number:

807-735-2096

### Fax Number:

807-735-2286

### E-Mail:

[municipality@red-lake.com](mailto:municipality@red-lake.com)

### Website:

[www.redlake.ca](http://www.redlake.ca)

### After Hour Trouble Calls

Please call 727-2597

## **Planning Advisory Committee**

Monday, January 9<sup>th</sup>, 2012  
(Start @ 5:45 p.m.)

## **Council Meeting(s)**

### Committee of the Whole

**Monday, January 9<sup>th</sup>, 2012**  
(Start at 12:00 noon)

### Regular Council Meeting

**Monday, Dec. 19<sup>th</sup>, 2011**  
(Start at 6:00 p.m.)

Committee of the Whole and Regular Council meetings are open to the Public. The Meetings will commence at the times noted above.

Individuals or groups wishing to appear as a Delegation at a Regular Council Meeting or Committee of the Whole Meeting shall submit a request, in writing, to the Clerk not later than 4:30 p.m. on the Wednesday prior to the meeting. The individual or group shall state the nature of the business to be discussed and to which the said person shall confine their remarks.

Agendas can be found on our website at [www.redlake.ca](http://www.redlake.ca) or picked up at the Municipal Office after 3:00 p.m. on the Friday before the Meeting.

## Christmas Recycling

Christmas is around the corner and there will be lots of questions as to what is recyclable and what is not recyclable.

Below is a list of common holiday waste:

### **Recyclable:**

- Cardboard boxes (bundled to less than 1m in size)
- Boxboard – (plastic windows not marked with recyclable symbol must be removed)
- Tissue paper
- Brown paper wrapping paper
- Christmas trees (see pg. 2)
- Tin containers (ie. cookie & chocolate containers)



### **Non-Recyclable:**

- Gift bags
- Wrapping paper (except brown paper)
- Paper towel
- Aluminum foil (ie. roasters, pie plates, cookie sheets, tin foil)
- Combination containers (both cardboard & metal)



## **Holiday Waste Disposal Site Hours of Operation**

Over the holidays the Municipal Waste Disposal Site will be operating during the following hours:

December 23 <sup>rd</sup> , 2011	10:00 a.m. – 4:00 p.m.
December 24 <sup>th</sup> , 2011	10:00 a.m. – 12:30 p.m.
December 25 <sup>th</sup> , 2011 – December 27 <sup>th</sup> , 2011	Closed
December 28 <sup>th</sup> , 2011 – December 30 <sup>th</sup> , 2011	10:00 a.m. – 4:00 p.m.
December 31 <sup>st</sup> , 2011	10:00 a.m. – 12:30 p.m.
January 1 <sup>st</sup> , 2012 – January 2 <sup>nd</sup> , 2012	Closed
January 3 <sup>rd</sup> , 2012	Back to regular schedule

## **Holiday Garbage & Recycling Collection Schedule**

The garbage and recycling schedule will not be affected by the Christmas holidays.



If you have any questions about the recycling program, please contact the By-Law Enforcement Officer at 735-2096 ext. 225.



Merry Christmas and Happy New Year from the By-Law Department!!

## Recycling Issues

The recycling program is going well but we are still having problems with the following non-recyclable items being placed in the recycling:

- Plastic Bags
- Glass not separated
- Paper towel and Kleenex
- Combination containers
- Hazardous waste
- Dryer sheets
- Coffee Cups
- \* Sharpies (ie. needles)



\* The Municipality has come across needles in plastic containers. This is **absolutely not acceptable** and is an extreme health hazard to everyone handling and disposing of recyclables. Please ensure "sharpies" are disposed of properly.

## Christmas Tree Disposal

There will be curbside collection for Christmas trees on

**Thursday, January 12<sup>th</sup>, 2012.**

Please do not place your Christmas tree on the curbside until the evening before or the day of collection. If the tree is not easily accessible, it will not be collected.

**Please cut your Christmas tree in half and remove any plastic bags from the tree.**

If you wish to dispose of your Christmas tree prior to this date, you may bring it for **FREE** to the Municipal Landfill during normal operating hours.



## Overflowing Containers

Overflowing containers have become an issue. Most recyclables are light and by overfilling the containers it is causing recyclables to be spread all over the streets and properties.

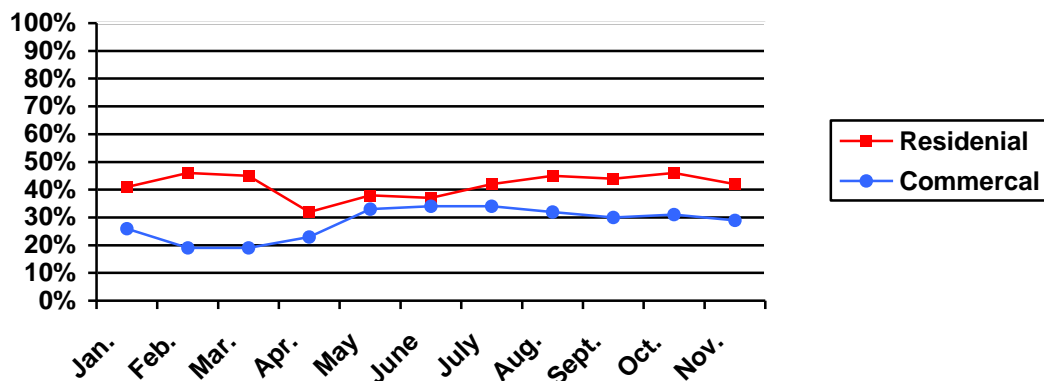
Unfortunately the Municipality cannot accept recyclable bags so please take the time to properly pack your recyclables to help keep the Municipality clean.

Thank you in advance for your Cooperation!



## Waste Diversion Percentage

Residential waste diversion for the month of November is 42%. This is a 4% decrease from October. Commercial waste diversion for the month of November is 29% which is a 2% decrease from October.



## Household Hazardous Waste

Household hazardous waste is hazardous materials used during the normal operation of a household. If the hazardous material is unknown or mixed with another hazardous material it will not be accepted at the Waste Disposal Site. Household hazardous material shall be in the original container. Examples of household hazardous waste are the following:

- Aerosol containers
- Paint (cans and spray cans)
- Oil & oil containers that use to contain oil
- Cleaning supplies



Household hazardous materials can only be disposed of for **FREE** at the Municipal Waste Disposal Site on **Saturdays**.

**\*\* These items cannot be placed in curbside recycling! \*\***

## E-Waste

E-Waste can be disposed of at the Municipal Waste Disposal Site during regular hours of operation. E-waste shall include the following:

- Desktop & Laptop Computers
- Monitors & Mice
- Telephones & Cell Phones
- PDAs & Pagers
- Audio & Video Players
- Personal hand held computers
- Equalizers & Amplifiers
- Radios
- Printing Devices
- Computer Peripherals
- Televisions



- Terminals
- Turntables
- Video Player/Projectors
- Video Recorders
- Cameras
- Tuners
- Speakers & Receivers
- Disk & CD & CD-ROM Drives
- Keyboards
- Printing Devices
- Fax Machines

**\*\* These items cannot be placed in curbside recycling! \*\***

## **Recyclables**

- All steel or tin cans
- All aluminum beverage cans
- All plastic containers with a Recycle Symbol #1 to #7
- Waxed milk and juice cartons
- Tetrapacks (juice boxes)
- Newspaper, white paper, brown paper bags
- Corrugated cardboard, broken down
- Box board (single layer, non-corrugated)
- Books (remove hard covers)
- Cardboard egg cartons, mailing tubes
- Magazines, catalogues



## **Non-Recyclables**

- Aerosol cans, propane bottles
- Plastic with no recycle symbol
- Plastic bags, plastic packaging
- Toys, Flower pots
- Styrofoam
- Aluminum foil, pie plates, etc.
- Scrap metal (ie. hangers)
- Anything containing a hazardous substance (motor oil, paint, etc.)
- Coffee cups

# Waste Disposal & Recycling Schedule

January 2012				
Mon	Tues	Wed	Thurs	Fri
2	3	4	5	6
9	10	11	12	13
16	17	18	19	20
23	24	25	26	27
30	31			

February 2012				
Mon	Tues	Wed	Thurs	Fri
		1	2	3
6	7	8	9	10
13	14	15	16	17
20	21	22	23	24
27	28	29		

March 2012				
Mon	Tues	Wed	Thurs	Fri
			1	2
5	6	7	8	9
12	13	14	15	16
19	20	21	22	23
26	27	28	29	30

April 2012				
Mon	Tues	Wed	Thurs	Fri
2	3	4	5	6
9	10	11	12	13
16	17	18	19	20
23	24	25	26	27
30				

May 2012				
Mon	Tues	Wed	Thurs	Fri
	1	2	3	4
7	8	9	10	11
14	15	16	17	18
21	22	23	24	25
28	29	30	31	

June 2012				
Mon	Tues	Wed	Thurs	Fri
				1
4	5	6	7	8
11	12	13	14	15
18	19	20	21	22
25	26	27	28	29

Red Lake – Residential Garbage  
 Madsen/Starratt Olsen – Residential Garbage  
 McKenzie Island – Residential Garbage  
 Red Lake – Commercial Garbage  
 Balmertown – Commercial Garbage  
 Cochenour – Commercial Garbage

Balmertown – Residential Recycling  
 Chukuni Subdivision – Residential Recycling  
 Cochenour – Residential Recycling

Balmertown – Residential Garbage  
 Balmertown – Commercial Recycling  
 Cochenour – Residential Garbage  
 Cochenour – Commercial Recycling  
 Red Lake – Commercial Recycling  
 Chukuni Subdivision – Residential Garbage

Red Lake – Residential Recycling  
 Madsen/Starratt Olsen – Residential Recycling

Mckenzie Island – Residential Recycling